

DREER'S Superb Nasturtiums

EVERYONE is familiar with this glorious annual. We make a specialty of it, carrying in stock between 40 and 50 of the very choicest varieties both of Fall or Climbing and the Dwarf or Tom Thumb sorts. We put up collections, each containing 12 of the very finest and most distinct colors. Price 50 cts. postpaid. Finest mixed colors 5 cts. per pkt.; 15 cts. per oz.; 30 cts. per 1/4 lb.; \$1.00 per lb. postpaid. In ordering be sure and state whether you wish the tall or dwarf growing varieties. The foregoing and many other specialties are freely illustrated and described in our 1904

Garden Book

the finest catalogue of the year, 208 pages full of valuable information regarding

Seeds, Plants, Bulbs, etc.

Everybody who has a garden should have a copy. We will send it

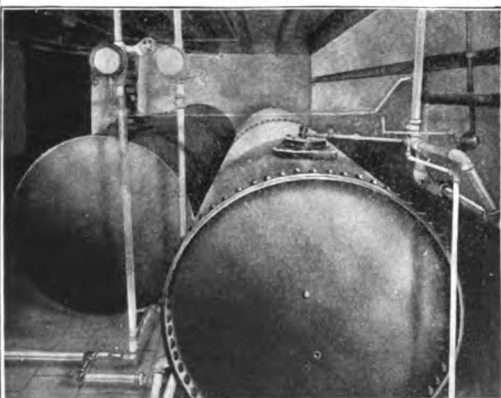
FREE

if you will mention COUNTRY LIFE IN AMERICA when writing



Henry A. Dreer, Philadelphia

Water in Country Homes



The Kewanee Pneumatic System

of basement and underground tanks supplies water throughout the house and grounds with fire protection equal to city water mains. (Illustration from plant in basement of C. E. Lane's residence, Lombard, Ill.)

LANDSCAPE NOT DISFIGURED

with unsightly tanks. No freezing, leaking or blowing over. Write for our booklet, "A City Water Supply for Country Homes."

KEWANEE PNEUMATIC WATER SUPPLY CO.
DRAWER "A," KEWANEE, ILL.

AN INEXPENSIVE VACATION CLUB IN THE COUNTRY

HOW is a man of limited means whose business is in the city to have a country home? One attractive solution of this problem is a country club; a club which affords a quiet country home, where a man may take not only his wife but his children and remain any desired length of time.

A plan for such a club originated in the mind of a New York man about three years ago, and he at once invited half a dozen congenial acquaintances to meet at his office one evening. There, in the heart of the most nerve-racking city on earth, these friends planned a way of occasional escape to the dear quiet of the country by



A \$400 cabin belonging to one of the club members. It is 12 x 32, with a veranda 8 feet wide. The interior consists of one large room, divided by curtains

organizing what is now the Mashipacong Club. There is a club-house and a number of privately constructed cabins for the families of some of the members. Others live in the club-house. The membership of the club is limited to twenty.

The constitution and by-laws adopted were those of a game, fish, and forest preserve, as the founders are specially interested in those subjects, and they offer an important field for development.

The next step was the purchase of what was called an abandoned farm—a term which has acquired a new and interesting significance to the seeker after a country home. The place selected is, however, much more forest than farm. It comprises 1,000 acres, the greater part of which is heavily timbered, and contains a lake about a mile long, with sloping banks, wooded to the water's edge. The tract is in the Kittatiny hills, within easy reach of New York City, but 1,400 feet nearer heaven. This insures a cool temperature and a delightful breeze all summer.

A journey from New York City of ninety miles by rail, and a drive of ten miles, brings one to the Mashipacong Club. All told, it takes five hours to get there, and the round trip costs \$3.60.

On the club land there is a farmhouse, a large stable, outbuildings, an orchard, a hay-meadow, grape-vines, and other features of farm life. There is also a rich growth of blueberries, blackberries, raspberries, and cranberries.

This entire tract with its many advantages was bought for \$3,500. The membership fee is \$100 and the annual dues are \$25, thus placing membership easily within the reach of people of moderate means, though the present list happens not to be confined to such.

As soon as the deed was signed a man and his wife were hired as caretakers and installed in the farmhouse. The next purchase was a pair of strong, good-looking, sound horses and a three-seated surrey adapted for travel over the mountain roads. The man's duties were to attend to the horses and other stock which was at once bought, to convey guests between the railroad station and the club, to make a garden, do what small farming the club required, cut and haul wood as needed, and conduct such incipient forestry as might be ordered.

The caretaker's wife boarded the club members and their guests, having been selected with special reference to her skill as a good, plain cook.

The building of the club-house was the next important step. For reasons of sentiment and picturesqueness, as well as economy, it had been decided that the houses or, preferably, cabins, including the club-house, should be built of logs with the bark on. Just how unique and distinct-



An Abundant Water Supply

under good pressure is a necessity in the country home for proper fire protection and safe sanitation.

The Caldwell Tank and Tower INSURES THIS

THE W. E. CALDWELL CO., Louisville, Ky. CINCINNATI, Nov. 10, 1900.

Gentlemen: The four-column, thirty-nine-foot, Class D, Sectional Steel Tower, with tank, which you shipped to my home, at Watch Hill, Rhode Island, about a year ago, was put up by parties there, and has given entire satisfaction during time it has been in use.

Yours truly,

W. A. PROCTER.

Let us send you our catalogue. You have but to ask

W. E. Caldwell Co., Louisville, Ky.

Running Water IN YOUR Country Home

can be enjoyed by installing the

RIFE HYDRAULIC ENGINE

This is a pump which is

Operated Automatically

by the power furnished by any brook or stream, however small, and produces a constant flow in your house at any distance or any height. As it operates automatically, there is absolutely no cost of maintenance, and it requires no attention whatever. We make a specialty of equipping country places with a complete water-works system, extending to stable, garden, greenhouses, etc. Write for plans and estimates. Catalogue on request.

POWER SPECIALTY COMPANY

126 1-2 Liberty Street

New York City



Residence of W. De Forest Wright, Sands Point, L. I.

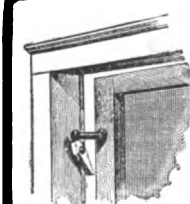
X denotes location of Water Plant

The ACME WATER STORAGE SYSTEM

For Public Water Supplies, Country Residences, Institutions, Factories, etc.

PROVIDES a means of water storage for general use and fire extinguishment. Greater safety; higher economy and efficiency; better sanitary conditions obtained by the use of this system. Possesses many advantages which cannot be obtained by the use of stand pipe or elevated tank on tower. Special advantages for use in connection with country residences. No unsightly tower and tank required with this system.

The Acme Water Storage and Construction Co.
18-21 Park Row Building, New York



The Silent Door.

Avoid the nerve-racking slam of the screen door. Stop its banging and jarring. In 300,000 homes where the

"DIME"

SCREEN DOOR CHECK

is used, the slam of the door is never heard. The rubber bumper first checks the door, then allows it to close softly. At your hardware or housefurnishing store or by mail for 12 cents. Address CALDWELL MFG. CO., 8 Jones St., Rochester, N. Y.



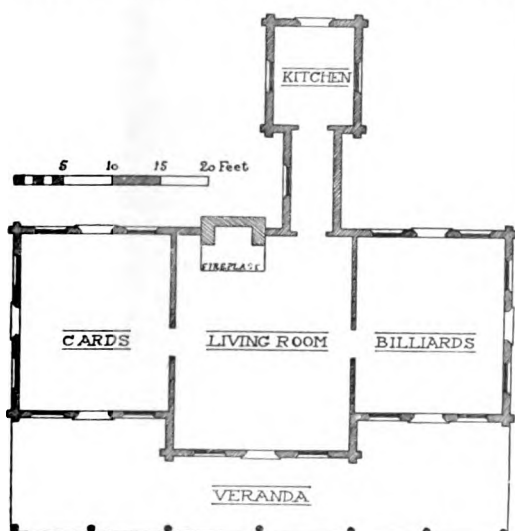
This room, intended for billiards, at present is kept as a men's dormitory. It contains three beds, with space for a half-dozen cots.

ive this feature was the members did not realize until they tried to find men to put up the buildings. Then it seemed that no man in that part of the world knew how to put the logs together. It was not within the wish or the financial limits of the club to hire an expensive architect to put up fancy log cabins. The plain, old-fashioned article was wanted—the historic log cabin of early American days—such as the pioneer built with his own hands and sometimes the aid of his neighbors.

One man living near Mashipacong tract, who farmed in summer and did carpenter work between meals, was willing to learn, and to him the work was given. Cutting the logs and hauling them to the site chosen for the club-house was simple; but when confronted by the problem of actually putting them together the men stood around dumbly. Then the president, whose boyhood was spent in the pioneer West and who had helped build more than one such cabin, took off his coat, gripped an ax, and gave an object-lesson in notching out the logs. The men finally learned what was needed.

The plan of the club-house is extremely simple, and the president, who designed it, personally superintended its construction, arranging all the details and saving the club the expense of employing an architect.

This cabin is set among the trees at the edge of the lake. It contains a central club-room, a card-room, and a billiard-room—at present used for dormitories—a kitchen, cupboards, etc. The



Plan of the club-house

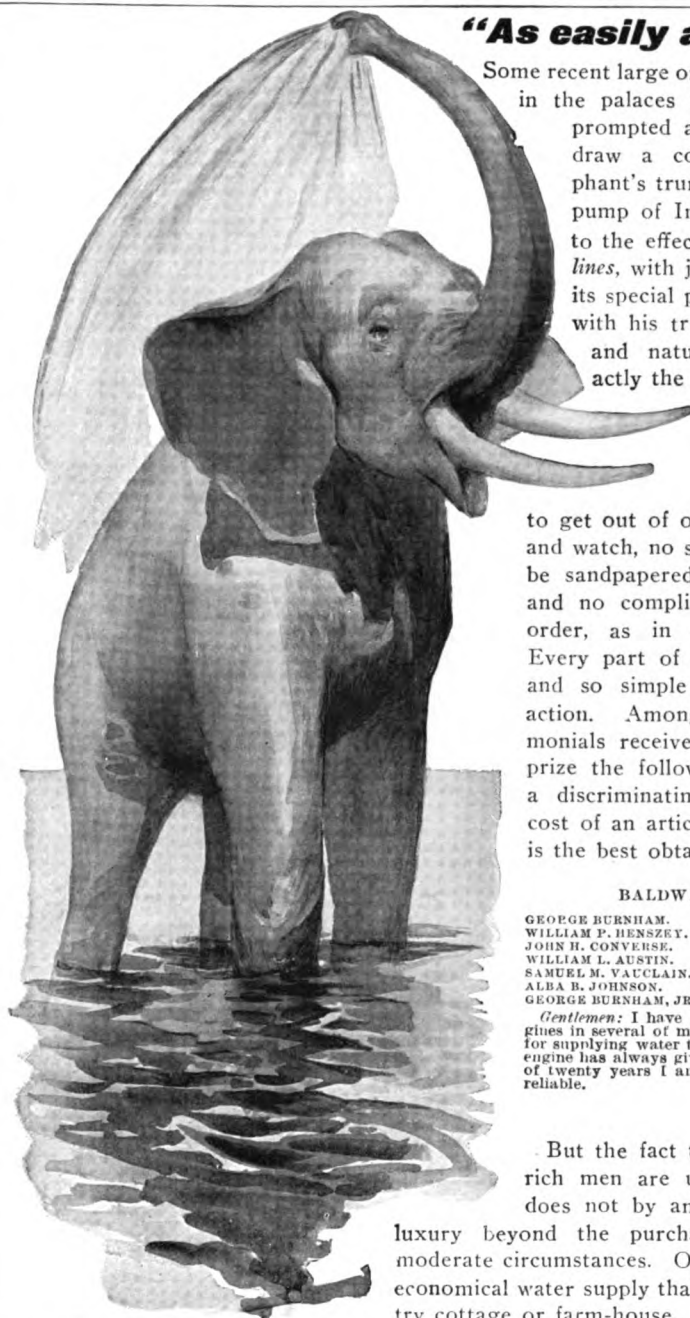
partitions between center and wings do not extend the full height of the rooms; and the great roof over all, heavily raftered, gives a most delightfully old-time effect. Across the entire front of the cabin is a roofed veranda.

From the veranda a rustic dock of spruce logs runs down to the lake.

The joy of the club-room is the fireplace of rough stones; and there is enough wood on the tract to furnish great, glowing fires forever.

The walls are hung with Navajo blankets, the furniture is of young hickory with the bark on, and the utmost simplicity is strictly observed, only a slight concession to rainy days being made in the form of billiard and pool tables.

The logs for the club-house did not cost anything, as they were cut from the club's own timber. The stones for the fireplace and chimney



"As easily as he breathes."

Some recent large orders for our pumps, to be used in the palaces of East Indian rajahs, have prompted a user in that far country to draw a comparison between the elephant's trunk (which he calls the natural pump of India) and the Hot-Air Pump, to the effect that each is built on *natural lines*, with just enough suction power for its special purpose. The elephant pumps with his trunk as easily as he breathes, and natural breathing describes exactly the easy continuous action of the

Hot-Air Pump.

It has no intricate valves to get out of order, no gasoline to regulate and watch, no sparkers to get blocked up and be sandpapered before the engine will go, and no complicated battery to get out of order, as in electrical pumping engines. Every part of a Hot-Air Pump is in sight and so simple a child can understand its action. Among the many valuable testimonials received in recent years, we highly prize the following, because it comes from a discriminating gentleman to whom the cost of an article matters little so long as it is the best obtainable.

BALDWIN LOCOMOTIVE WORKS.

GEOGE BURNHAM.
WILLIAM F. HENSEY.
JOHN H. CONVERSE.
WILLIAM L. AUSTIN.
SAMUEL M. VAUCLAIN.
ALBA B. JOHNSON.
GEORGE BURNHAM, JR.

Burnham, Williams & Co.

PHILADELPHIA, Feb. 11, 1904.

Gentlemen: I have used the Ericsson Hot-Air Pumping Engines in several of my houses, and have one in use at this time for supplying water to my own residence at Rosemont. The engine has always given satisfaction, and after an experience of twenty years I am able to commend it as effective and reliable.

Very truly yours,

JOHN H. CONVERSE.

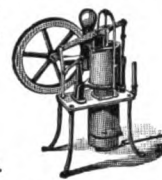
But the fact that Mr. Converse and other rich men are users of the Hot-Air Pump does not by any means signify that it is a luxury beyond the purchasing power of a man in moderate circumstances. On the contrary, it is the most economical water supply that can be installed in any country cottage or farm-house. It will very soon pay for its

cost. It does away entirely with lugging water by hand, whether for the bath, the kitchen, the lawn, the garden, or the live-stock. Its abundant supply is ever present, a cooling joy and comfort during the hot weather.

A Hot-Air Pump, representing a permanent investment which will outlast a generation, can now be bought at the very low price of \$108. Descriptive Catalogue C₅ sent free on application.

Rider-Ericsson Engine Co.

35 Warren St., New York. 239 Franklin St., Boston.
40 Dearborn St., Chicago. 692 Craig St., Montreal, P.Q.
40 N. 7th St., Philadelphia. 23 Pitt St., Sydney, N.S.W.
Teniente Rey 71, Havana, Cuba.

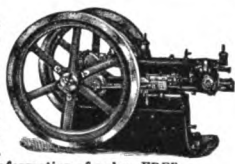


The Hot-Air Pump.

GEMMER Gas and Gasoline Engines

Built to fulfill your particular requirements for power. Economical, safe and satisfactory. GUARANTEED in every respect. If you are interested in securing a High Grade Engine for a low price, write our Consulting Engineer for Gas Engine Information of value, FREE.

GEMMER ENGINE & MFG. CO., 1605 Park St., Marion, Ind.

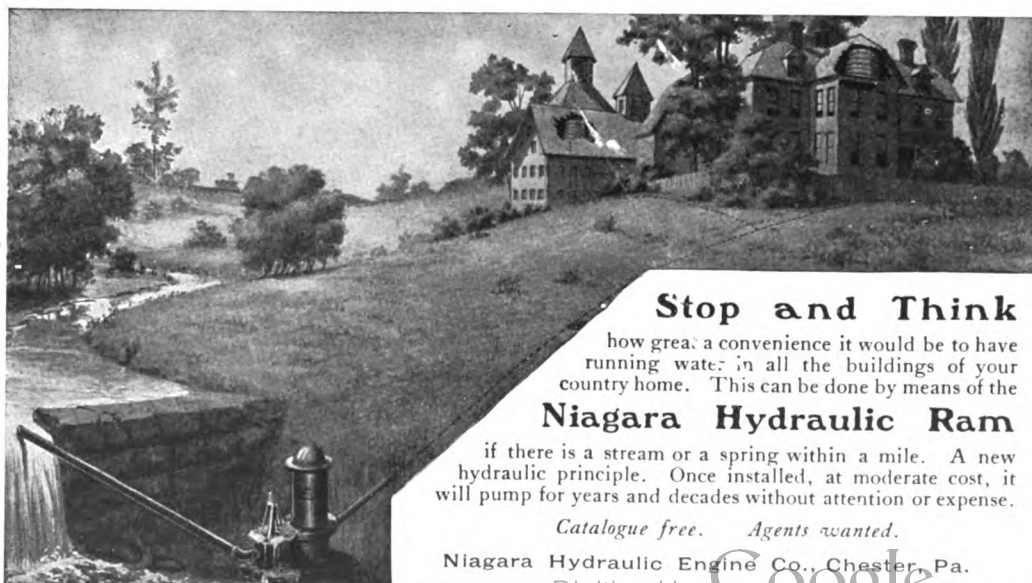
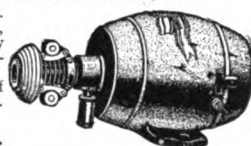


Apple Automatic Sparker

For Gas Engines, Automobiles, Launches, Etc.

HAS FEATURES FOUND ON NO OTHER. No batteries, no belt, no switch, no commutator troubles. Entirely enclosed, making it dirt and water proof. Easily attached. Send for complete description of this and other ignition apparatus.

THE DAYTON ELECTRICAL MFG. CO.
127 Reibold Bldg., DAYTON, O.



Stop and Think

how great a convenience it would be to have running water in all the buildings of your country home. This can be done by means of the

Niagara Hydraulic Ram

if there is a stream or a spring within a mile. A new hydraulic principle. Once installed, at moderate cost, it will pump for years and decades without attention or expense.

Catalogue free. Agents wanted.

Niagara Hydraulic Engine Co., Chester, Pa.

Digitized by Google



Built to Order for
Mr. John Clifford, Chicago

Zinc Lined Refrigerators Cause Disease

The zinc corrodes and the oxide poisons
milk and food

McCray Refrigerators

Porcelain Tile, Opal Glass,
or Wood Lined

All sizes, for Residences, Clubs, Hotels, Hospitals, Grocers, Markets, Florists, etc. Are endorsed by physicians, hospitals and prominent people. The McCray System of Refrigeration insures perfect circulation of pure cold air, absolutely dry. McCray Refrigerators are lined throughout with Opal Glass, Porcelain Tile or Odorless Wood (no zinc is used). They are dry, clean and hygienic, of superior construction, are unequalled for economy of ice and can be iced from outside of house. Every refrigerator is guaranteed.

McCray Refrigerators are also built to order
Catalogues and estimates free

Catalogue No. 39 for residences; No. 45 for hotels, public institutions, clubs, etc.; No. 56 for meat markets; No. 63 for grocers; No. 70 for florists. Valuable book, "How to Use a Refrigerator," sent on request.

McCray Refrigerator Co., 341 Mill St., Kendallville, Ind.

BRANCH OFFICES AND SALESROOMS:
CHICAGO, 55 Wabash Ave. COLUMBUS, OHIO, 356 N. High St.
NEW YORK, 341 Broadway. COLUMBUS, S. C., Jerome Bldg.
BOSTON, 52 Commercial St. Washington, D. C., 60 F St., N. W.
PHILADELPHIA, 1217 Chestnut St. DETROIT, 305 Woodward Ave.
SAN FRANCISCO, 122 Market St. PITTSBURGH, 636 Smithfield St.
CLEVELAND, OHIO, 64 Prospect St. ST. LOUIS, 404 N. Third St.
Address main office unless you reside in one of the above cities.



STARK TREES best by Test—78 Years
LARGEST Nursery.
FRUIT BOOK free. We **PAY CASH**
WANT MORE SALESMEN **PAY Weekly**
STARK BROS., Louisiana, Mo.; Dansville, N. Y.; Etc

Die in
Open
Air



**RATS
and
MICE**

leave choicest
food and grain
for

**RAT
BIS-KIT**

Packed in boxes.
READY FOR
USE.

The only poison it is safe to have about. Acts quickly. Die in open air seeking water. Dry, clean. Put in rat holes, linen closets, pantries, etc., without soiling anything.

WHY TAKE RISK OF MIXING POISON?

Endorsed by all leading drug houses in the
United States. Sold over the entire world.

Ask your druggist. If he hasn't it, send us 25 cents for one box or 60 cents for three boxes, express prepaid.
Rats and mice are the greatest germ carriers known.

The Rat Biscuit Co., Dept. 14, Springfield, Ohio

were also taken from the club grounds, thus saving a large item. The cost of building the club-house was:

Lumber (flooring, doors, sashes, shingles, etc.)	\$162
Building hardware (nails, screws, hinges, locks, etc.)	50
Labor	488
Total	\$900

As soon as the club-house was completed it became headquarters for the members, and the farmhouse was relegated to the exclusive use of the caretaker. However, the members live for the most part outdoors, even the meals being served on the long veranda of the club-house, except in cold or stormy weather. For this reason no large buildings are required.

By maintaining a keeper and a cook permanently the club is always ready to receive mem-



Fireplace of rough field-stone. The interior finish of the club-house is like the exterior—logs with the bark on

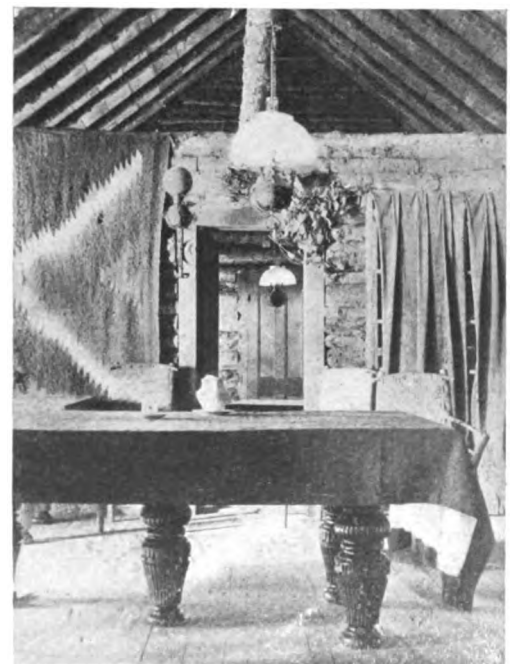
bers. It is only necessary to write the keeper to meet a given number of people at the station, and they can have the full benefit of their own country home in good running order.

Members may, if they choose, do their own housekeeping and have all or a part of their meals in their own cabins; but for the most part they prefer to eat at the club-house. The plan is thus both cooperative and independent, combining the restful privacy of home life with the convenience of club service.

The land immediately surrounding the lake is divided into building lots, this arrangement giving each a water frontage; and from his private dock any member can row or paddle across the lake to the club-house whenever he may prefer that method of locomotion to walking around. It is noticeable that arm exercise seems usually preferred to leg development, as in season the lake is seldom without a picturesque quota of boats afloat.

The lake affords good fishing, and a member can tramp miles through the woods, along various old, abandoned roads teeming with interest to the nature-lover, without leaving his own grounds.

Mashipacong Club is intended to be a game and forestry preserve as well as a summer home for its members. The forestry work will be conducted along those scientific lines which result in



The table is a combination dining, billiard, pool, and ping-pong table in the main room of the club-house



BOX TREES are the most useful of all decorative plants; they are moderate in price and being an evergreen are attractive at all seasons. They are hardy in nearly all localities, standing considerable frost without injury. Planted either in the ground or in receptacles they are very ornamental, especially for formal gardens or terraces, or they may be used for veranda and indoor decoration.

COLONIAL PLANT KETTLES

as shown in illustration are very appropriate for box trees, being the most serviceable plant receptacle in the market. They are made of cast iron, with classic wrought-iron rings at either side for handles. Although very simple in design, they are artistic and suitable for indoor use as well as on the lawn. Made in eight sizes. Prices quoted upon application.

We have a large stock of thrifty Box Trees pyramid shape, 2½ to 3 feet high, we offer at \$2.50 each. Planted in Colonial Kettles, \$1.25 each extra. Larger and extra fine specimens, \$4.00 each.

Every purchaser will receive our book, "How to Beautify Home Surroundings," with formal and informal gardens fully described and illustrated.

Wagner Park Conservatories

Sidney, Ohio

"We Go Anywhere for Business"

Spear's New Cooking Range

for Summer Homes

Abundant Hot Water

at all times; splendid baker, roaster, broiler. Excellent combustion—utilizes all the gases and **SAVES ONE-HALF THE COAL**. Burns hard or soft coal. Soon pays for itself. Fire can be kept 42 hours without adding fuel. Write for particulars.

Heating Country Homes

One of our specialties. Entire systems installed (hot water, hot air, steam). Open grates and stoves, for wood or coal—to take the chill off nursery or living room. Stoves for laundry, greenhouse, chicken house, stable. Write us of your needs—our reply will be prompt and explicit.

JAMES SPEAR STOVE AND HEATING CO.
1014 Market Street, Philadelphia, Pa.

SMOKY FIREPLACES

MADE TO DRAW OR NO CHARGE

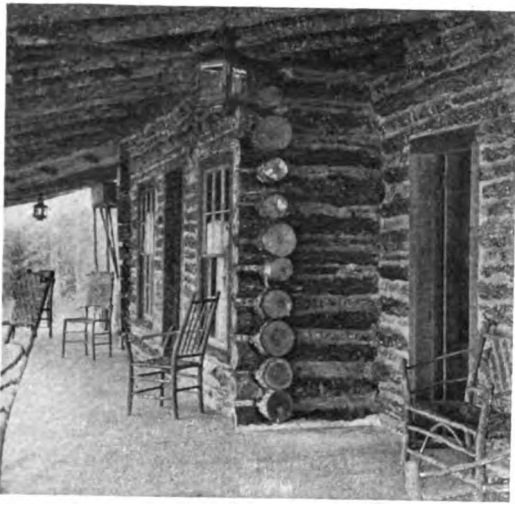
For particulars address
JOHN WHITLEY, "Chimney Expert"
215 Fulton Street Brooklyn, N. Y.



Accident Proof Cribs

with high sliding sides and closely spaced spindles, prevent Mothers worrying, as the Baby can't fall out, climb over or stick its head through. Fitted with high grade woven wire spring and finished in white enamel or colors. Ask your dealer for Foster's No. 40 Ideal Crib.

All our goods bear **THE IDEAL** this trade mark
For illustrated booklet address
FOSTER BROS. MFG. CO., 32 Broad Street, Utica, N. Y.
1422 N. 16th St., St. Louis, Mo.
Manufacturers of Foster's Ideal Spring Beds and Mattresses and the "Ideal" line of Iron Beds, Cribs, Divans, etc.



This veranda is 12 feet wide and 64 feet long, extending across the entire front of the club-house, and all the principal rooms open directly onto the veranda. It faces the lake

making the forest self-supporting and eventually a source of revenue.

The club is so young that not a great deal has been accomplished in the way of fencing; hence the tract has not yet been stocked with big game. Birds and gray squirrels are rigidly protected and are already increasing. A large number of Belgian hares have been turned loose from time to time, and the experiment of adapting them to the environment is extremely interesting.

Jersey cows, real cream, fresh butter, and high-bred poultry are among the home comforts of Mashipacong Club; and members not above eating pickerel may catch their own fish for the table if they wish, but at present the bass are protected.

An ice-house, which is filled from the lake each winter, gives the club the comfortable feeling of being its own trust.

Women are admitted to membership in the club and are most enthusiastic in availing themselves of its advantages.

The annual running expenses of the club are:

Wages of caretaker.....	\$240
Feed for horses.....	360
Taxes.....	20
Incidentals.....	180
Total.....	\$800

This sounds almost too simple to be true, but it must be remembered that simplicity and economy are leading objects of the club.

In addition to the regular wages paid the caretaker, individual members pay her \$1 a day apiece for the board of themselves, their families, and their guests whenever they stay at the club. This adjusts the expense in proportion to the use



The old house of the abandoned farm, now the home of the club's caretaker

each member makes of the club. By keeping poultry, cows, and a garden the caretaker supplies a large part of the food directly on the farm.

Since Mashipacong tract was bought by the club three years ago its value has at least doubled, owing to occupancy and increase in wood prices. Stumpage to an amount equaling the original purchase price of the tract could be sold to-day without impairing the value of the land for club purposes. The investment is, therefore, excellent from a financial point of view as well as from a physical and even ethical.

The great importance of preserving the forests of our country is being recognized at last after years of reckless waste; and every one who can aid in this work is rendering his country a valuable service. An opportunity to do this on a sound business basis is furnished by such a club as Mashipacong; and thus to its attractiveness as a summer home is added the inducement of good citizenship in becoming a member.

MYRA EMMONS.



Made in Boards
32 x 36 Inches of

Superior to Wood or Metal Lath

in the construction of plastered
walls and ceilings

SAVES TIME IN CONSTRUCTION

Incombustible Materials

NAILED DIRECTLY TO THE STUDDING AND FINISHED WITH PLASTER

Walls and Ceilings constructed on Sackett Plaster Board will not fall; are Fire, Heat, Cold and Sound resisting.

SAMPLE AND CIRCULAR ON APPLICATION

SACKETT WALL BOARD CO.

13-21 BATTERY PLACE

Whitehall Building

NEW YORK

Hardware COMBINATION BENCH AND TOOL CABINET



Standard, highest-grade Tools in Polished Oak Cabinet, with a thoroughly rigid and practicable Work-bench and good Vise. We have sold Hardware and Tools for 56 years, and we guarantee this combination to be absolutely first-class in every respect.

We also have four wall cabinets.

No. 51-14 Tools,	\$5.00
No. 52-24 Tools,	10.00
No. 53-36 Tools,	15.00
No. 54-40 Tools,	20.00
No. 100—with Bench and 95 Tools,	\$80.00

Catalogue No. 1264 describes and illustrates all five outfits; ask for copy.

Our lines include Builders', Cabinet and Piano Hardware; Tools for all Trades; Bolts, Screws, Nuts and Factory Supplies; and Tools and Benches for Manual Training Schools.

We issue many supplementary catalogues, among which are the following: No. 1265 Clay Modeling and Plaster Carving Tools; No. 1266, Wood Carvers' Tools; No. 1267, Venetian Iron and Tools; No. 1268, Work Benches. Correspondence invited.

HAMMACHER, SCHLEMMER & COMPANY

New Home after May 1st, Fourth Ave. and 13th St.

NEW YORK CITY, SINCE 1848

Tools

CONVENIENCE **COLT** ACETYLENE CARBIDE-FEED-GENERATOR

Anybody who can run a furnace can learn in a quarter of an hour the way to charge and operate a "Colt" Generator. Instead of the daily attention bestowed on a furnace, fifteen minutes about every two weeks is all that is required to recharge the "Colt." It is automatic in its action, works when gas is needed, ceases when no gas is burned, is always ready, and never gets out of order. Ordinary gas piping is used and the same fixtures, change being required in the burners only. Floods of light are available—more than you need.

Let us send you our FREE book. It will Prove What We Claim.

We make Outfits of all sizes, 10 to 5,000 Lights, from \$18.00 upward, suitable for country homes, schools, churches, libraries, factories, hotels, club-houses, theatres and halls, especially in isolated localities, and for towns and villages where there is no other supply.

J. B. COLT COMPANY, Dept. C2, 21 BARCLAY STREET, NEW YORK.
Philadelphia. Chicago. Los Angeles.



Heat the House From the Kitchen Fire

THE "HEATENCOOK" RANGE

is a combined cooking stove and hot water heater. Unequaled as a cook stove. Bakes, roasts, etc., to perfection. Made in the most substantial manner and finished in first-class style. An adjustable fire-pot is provided for summer or winter use. The "Heatencook" system will heat an entire house of modern size by hot water. Only one fire. Radiators are placed in the different rooms. Gives the greatest satisfaction. Plenty of hot water for bath and kitchen use. Very economical in fuel. Illustration shows how it appears when set up in the kitchen. Send for catalogue and get full particulars.

THE HEATENCOOK CO., Dept. A, York, Pa.